



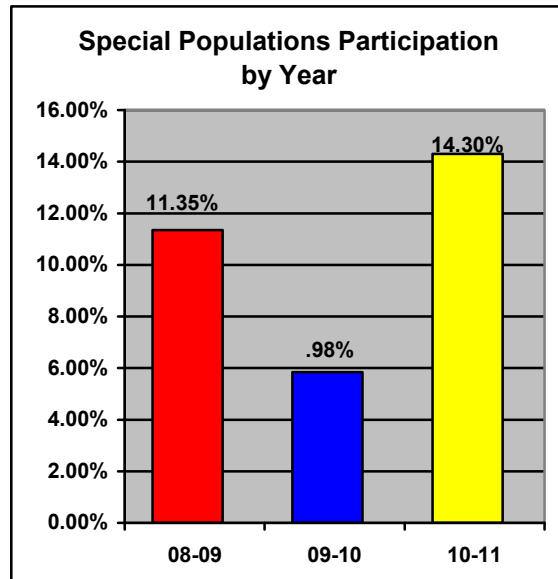
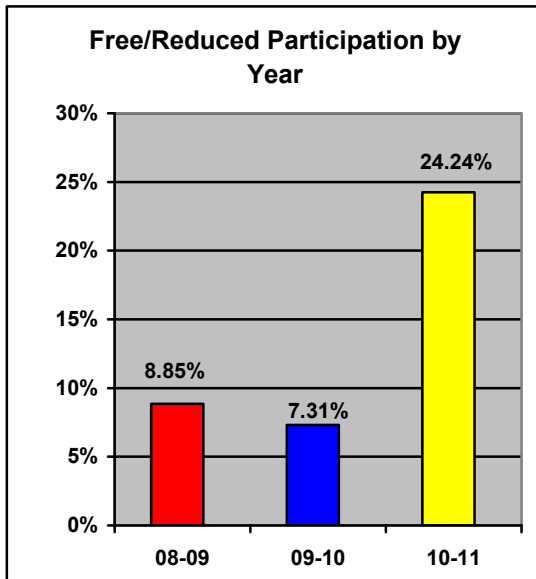
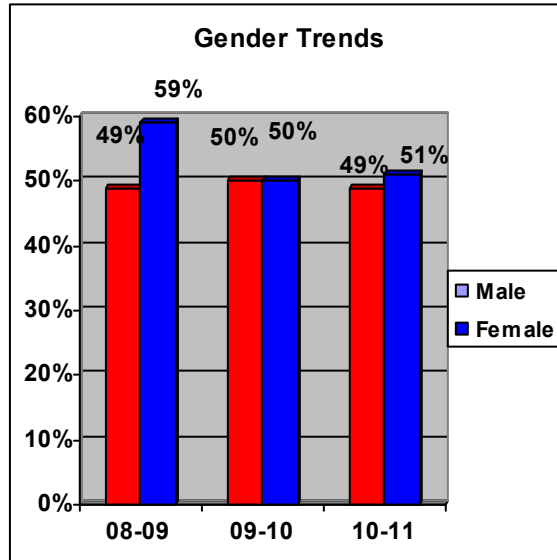
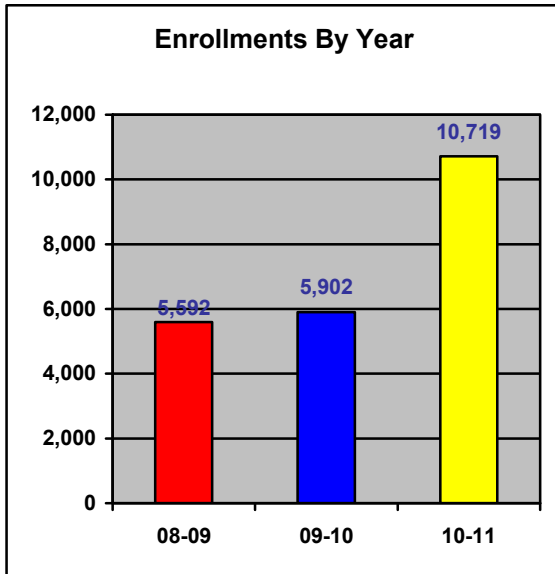
**2010-2011 Dashboard Report:
Area Career and Technical Education - District 24
J. Everett Light Career Center**

**Top Ten Hoosier Hot Jobs for the Region¹
(The following chart has not been updated)**

	Occupation	CTE Program	Education	Average Wage
1	Registered Nurse	511601 – Nursing (R.N. Training)	Associate’s Degree	\$50,418
2	Truck Drivers, Heavy and Tractor-Trailer	490205 – Truck and Bus Driver/Commercial	Moderate Term – On The Job Training	\$38,339
3	Sales Representatives, Wholesale and Manufacturing	521801 – Sales Distribution and Market, 521904 - Apparel and Accessories Market, 529999 – 521902 – Fashion Merchandising, 521899 – General Merchandising	Work Experience in Related Occupation	\$70,910
4	Customer Service Representative	520406 –Receptionist, 520411 – Customer Service Support	Moderate Term – On The Job Training	\$30,202
5	Business Operations Specialist	529999 – Business, Management and Marketing	Bachelor’s Degree	\$51,882
6	General and Operations Mangers	440401– Public Administration, 520701 – Entrepreneurship/Entrepreneurial Studies	Bachelor’s or Higher Degree, Plus Work Experience	\$89,177
7	Elementary School Teachers, except Special and Voc	131206 – Teacher Education, Multiple Levels	Bachelor’s Degree	\$42,632
8	First-Line Supervisors/Managers of Retail Sales	521804 – Selling Skills and Selling Operations, 529999 – Business, Management, Marketing, 521803 – Retailing and Retail Operation	Work Experience in Related Occupation	\$38,639
9	First-Line Supervisors/Managers or Office Management	520204 – Office Management and Supervision, 520207 – Customer Service Management	Work Experience In Related Occupation	\$44,676
10	Accountants and Auditors	520304 – Accounting and Finance, 520305 – Accounting and Business Management	Bachelor’ s Degree	\$56,085

1. Data received from 2006-2016 Long Term Indiana Occupational Projections – Top 10 openings with at least a \$29,000 wage

Enrollments and Demographics



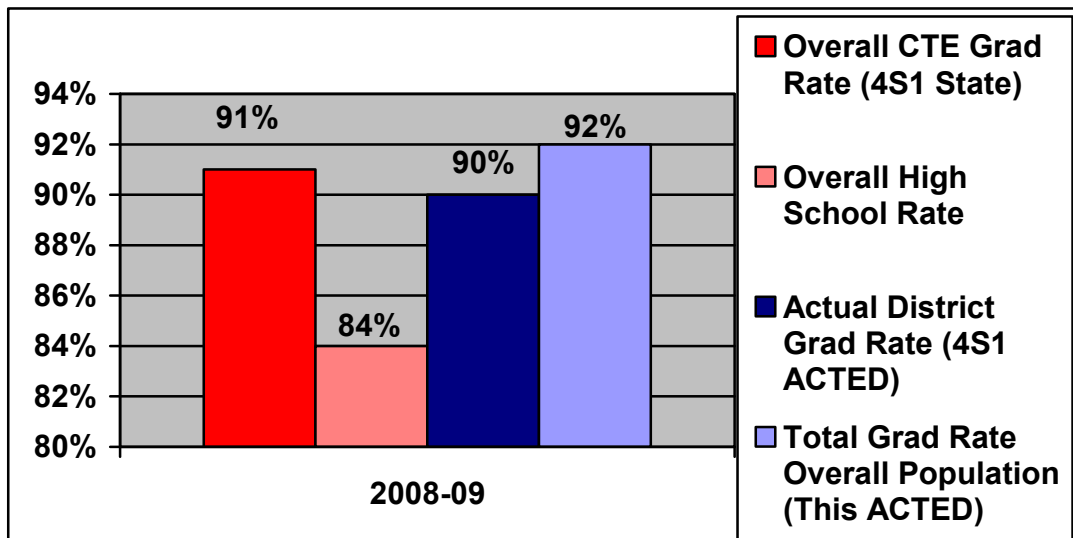


Allocation/Enrollments

Corp ID	School Name	Conducting School	Home School	Total
0630	Zionsville Community Schools	137	162	\$23,875
0665	Lebanon Community School Corp	1236	1250	\$35,493
3005	Hamilton Southeastern Schools	1836	1863	\$81,359
3030	Westfield-Washington Schools	1357	1424	\$42,882
3055	Sheridan Community Schools	84	106	\$15,206
3060	Carmel Clay Schools	2165	2225	\$121,254
3070	Noblesville Schools	584	702	\$79,722
5350	MSD Pike Township	1512	1643	\$168,293
5370	MSD Washington Township	1390	851	\$196,761
C3025	Hamilton Heights School Corp	418	440	\$22,986
Total		10,719	10,666	\$787,831



Graduation Rates-CTE students vs. All graduates²



² Data received from InTers and DOE.



Indiana Career and Technical Education Student Performance Indicators-Secondary

CTE Student Performance Indicators	Indicator Description
1S1 Academic Achievement in Reading/Lang Arts	Number of CTE concentrators who have passed the English/ Language Arts portion of the Graduation Qualifying Exam (GQE)
1S2 Academic Achievement in Mathematics	Number of CTE concentrators who have passed the Mathematics portion of the Graduation Qualifying Exam (GQE)
2S1 Technical Skill Attainment	Number of CTE concentrators and completers who passed state- approved technical skill assessments defined for Indiana Career Pathways.
3S1 School Completion	Number of CTE concentrators who earned a regular secondary school diploma.
4S1 Student Graduation Rate	Number of CTE concentrators who were included as graduates in the state's calculation.
5S1 Placement	Number of CTE concentrators who left secondary education and were placed in postsecondary education or advanced training, military service or employment in second quarter after leaving secondary education.
6S1 Nontraditional Participation	Number of CTE participants from underrepresented gender groups who participated in a program leading to employment in nontraditional fields.
6S2 Nontraditional Completion	Number of CTE completers from underrepresented gender groups who participated in a program leading to employment in nontraditional fields.



Additional CTE Student Performance Indicators	Indicator Description
1EXT Enrollment in Programs/Pathways	Number of CTE participants who enrolled in one or more courses in a CTE program or Indiana College and Career Pathway.
2EXT Postsecondary Enrollment	Number of CTE participants who graduated last year and are enrolled in postsecondary during the current year.
3EXT Cluster Match	Number of CTE participants who graduated last year and are enrolled in postsecondary during the current year in the same major or career cluster/pathway as they were in high school.
4EXT Industry Certification/ Licensing	Number of CTE participants students who graduated last year with a state or industry-recognized certificate, license or credential.
5EXT Dual Credits	Number of CTE participants who graduated last year with transcribed postsecondary credits (dual credits).
6EXT Remediation	Number of CTE participants who graduated last year and who enrolled in postsecondary remedial mathematics, writing, or reading courses upon entering postsecondary education.
Completion Rate	Number of CTE participants enrolled in CTE in one of the last four years who also completed a program during those four years.
1S1/LT	Number of CTE concentrators who failed language arts in 10 th grade and passed in a subsequent year.
1S2/LT	Number of CTE concentrators who failed math in 10 th grade and passed in a subsequent year.

Secondary Concentrator and Participant Definitions

CTE Participant:

A student who has earned one (1) or more credits in any career and technical education (CTE) course.

CTE Concentrator:

A student who has earned at least six (6) credits in designated CTE courses in a single state approved College and Career Pathway.



Indiana Career and Technical Education Student Performance Indicators-Postsecondary

CTE Student Performance Indicators	Indicator Description
1P1 Technical Skill Attainment	Number of CTE concentrators and completers who have passed technical skill assessments that are aligned with industry-recognized standards.
2P1 Credential, Certificate, or Degree	Number of CTE concentrators who have received an industry-recognized credential, a certificate, or a degree.
3P1 Student Retention or Transfer	Number of CTE concentrators who remained enrolled in their original postsecondary institution or transferred to another 2- or 4-year postsecondary institution.
4P1 Student Placement	Number of CTE concentrators who were placed or retained in employment, or placed in military service or apprenticeship programs following the program year in which they left postsecondary education.
5P1 Nontraditional Participation	Number of CTE concentrators from underrepresented gender groups who participated in a program that leads to employment in nontraditional fields.
5P2 Nontraditional Completion	Number of CTE completers from underrepresented gender groups who completed a program that leads to employment in nontraditional fields.



Additional CTE Student Performance Indicators	Indicator Description
1P Enrollment	Number of CTE participants enrolled in postsecondary education.
2P Related Emp Placement	Number of CTE participants which are placed in a related field of employment.
3P Industry Certificate/Licensing	Number of CTE participants which complete a state or industry-recognized certification or licensure.
4P Associate/Certificate Completers	Number of CTE participants which complete a two-year degree or certificate program within the normal time for completion.
5P Bachelor Completers	Number of CTE participants which complete a baccalaureate degree program within the normal time for completion.

Postsecondary Concentrator and Participant Definitions

CTE Concentrator:

A postsecondary/adult student who: (1) completes at least 12 academic or CTE credits within a single program area sequence that is comprised of 12 or more academic and technical credits and terminates in the award of an industry recognized credential, a certificate, or a degree; or (2) completes a short-term CTE program sequence of less than 12 credit units that terminates in an industry-recognized credential, a certificate, or a degree.

CTE Participant:

A postsecondary/adult student who has earned one (1) or more credits in any CTE program area.



J. Everett Light Career Center

ACTED		24											
Core Indicator		AUL 06-07	ACTED Level 06-07	AUL 07-08	ACTED Level 07-08	State AUL 08-09	Local AUL 08-09	ACTED Level 08-09	State AUL 09-10	Local AUL 09-10	ACTED Level 09-10	State AUL 10-11	Local AUL 10-11
1S1	Academic Achievement Lang Art	92.70%	75.45%	73.00%	84.78%	73.00%	73.00%	86.45%	69.00%	69.00%	64.10%	72.44%	72.44%
1S2	Academic Achievement Math	N/A		71.00%	83.04%	71.00%	71.00%	83.36%	67.00%	67.00%	66.93%	70.67%	70.67%
2S1	Technical Skill Attainment	91.50%	94.59%	N/A	96.49%	85.00%	93.50%	91.56%	80.00%	92.00%	99.35%	83.00%	95.00%
3S1	Completion	89.27%	84.46%	N/A	85.00%	89.00%	91.00%	90.42%	89.25%	91.25%	94.98%	90.50%	92.50%
4S1	Graduation (NCLB)	N/A		77.50%	85.65%	89.00%	89.00%	85.37%	90.67%	89.00%	90.41%	92.00%	90.33%
5S1	Placement	84.93%	86.39%	N/A		80.00%	86.00%	41.95%	75.00%	75.00%	98.41%	77.78%	77.78%
6S1	Non-Trad Participation	7.75%	10.57%	N/A	23.20%	11.00%	9.00%	30.05%	11.25%	9.25%	31.52%	20.00%	18.00%
6S2	Non-Trad Completion	8.73%	11.48%	N/A	4.76%	11.00%	10.00%	25.56%	13.00%	12.00%	10.36%	22.67%	21.67%
2X	Post Secondary Enrollment			N/A	58.16%	N/A	N/A	60.85%	N/A	N/A	62.56%	N/A	60.77%
3X	Cluster Match			N/A	9.61%	N/A	N/A	11.23%	N/A	N/A	14.97%	N/A	12.19%
4X	Industry Cert./ Licensing			N/A	2.71%	N/A	N/A	3.93%	N/A	N/A	2.54%	N/A	3.31%
5X	Dual Credit			N/A	4.28%	N/A	N/A	3.37%	N/A	N/A	4.52%	N/A	4.31%
6X	Remediation			N/A	21.11%	N/A	N/A	14.23%	N/A	N/A	1.52%	N/A	12.54%
	COMPLETION RATE			N/A	13.49%	N/A	N/A	33.98%	N/A	N/A	16.17%		21.46%
1S1/LT	Academic Achievement Lang Art / LAST TEST									N/A	83.49%		83.74%
1S2/LT	Academic Achievement Math / LAST TEST									N/A	82.69%		82.94%
	BELOW												
	MET OR EXCEEDED												
	NEED AN IMPROVEMENT PLAN												
	NEED AN IMPROVEMENT PLAN (year 2)												
	NEW INDICATORS TO BE REPORTED IN 2009/2010 (BASELINE)												
	NEW INDICATORS FOR REVIEW 2009-10												



2009-2010 Final Student Performance Indicator Results by School

	1S1 Academic Achievement	1S2 Academic Achievement	2S1 Technical Skills Attainment	3S1 Completion	4S1 Graduation (NCLB)	5S1 Placement	6S1 Non-Trad Participation	6S2 Non-Trad Completion
State Agreed Upon Level	69.00%	67.00%	80.00%	89.25%	90.67%	75.00%	11.25%	13.00%
Westfield Washington High School	100%	60.00%	--	100%	100%	--	31.31%	100%
Lebanon Sr High School	75.00%	66.67%	100%	100%	100%	100%	45.03%	--
Hamilton Heights High School	100%	100%	--	100%	100%	100%	26.11%	33.33%
Hamilton Southeastern HS	100%	100%	--	100%	100%	--	31.78%	--
Carmel High School	100%	100%	100%	100%	--	100%	--	--
Pike High School	42.31%	68.63%	100%	100%	100%	100%	35.58%	--
J. Everett Light Career Center	65.20%	66.09%	99.28%	94.37%	89.50%	98.45%	12.22%	9.55%
North Central High School	25.00%	50.00%	100%	85.71%	83.33%	100%	42.55%	--
Sheridan High/Middle School	100%	100%	--	100%	100%	--	39.66%	100%
Fishers High School	100%	100%	--	100%	100%	--	--	--
Noblesville High School	100%	66.67%	100%	100%	100%	--	45.71%	100%
Zionsville High School	--	100%	--	100%	--	--	--	--



2009-2010 Final Student Performance Indicator Results by Program

School	CIP Code Number	1S1 Academic Achievement	1S2 Academic Achievement	2S1 Technical Skills Attainment	3S1 Completion	4S1 Graduation (NCLB) (*)	5S1 Post Graduate Follow Up	6S1 Non-Trad Participation	6S2 Non-Trad Completion
State Agreed Upon Level		69.00%	67.00%	80.00%	89.25%	90.67%	75.00%	11.25%	13.00%
Lebanon Sr High School	010101	100%	100%	--	100%	--	100%	47.15%	--
	010104	--	--	--	--	--	--	50.00%	--
	010201	--	--	--	--	--	100%	--	--
	010601	--	--	--	100%	--	--	--	--
	010603	--	--	--	--	--	--	80.00%	--
	010901	100%	100%	--	100%	100%	--	67.39%	--
	011001	100%	50.00%	100%	100%	100%	--	--	--
	030299	--	--	--	--	--	--	50.00%	--
	110601	100%	100%	--	100%	100%	--	40.00%	--
	140401	--	--	--	--	--	--	14.29%	--
	149999	--	--	--	--	--	--	14.71%	--
	190501	--	--	--	100%	--	--	48.24%	--
	190504	100%	100%	--	100%	100%	--	38.89%	--
	260701	--	--	--	--	--	100%	--	--
	460201	75.00%	66.67%	--	100%	100%	--	--	--
	511601	--	--	--	--	--	--	25.00%	--
	520407	--	--	--	--	--	--	46.67%	--
	520905	--	--	--	--	--	100%	--	--
	521299	50.00%	50.00%	--	100%	--	--	--	--
Hamilton Heights High School	010101	--	--	--	--	--	100%	29.63%	--



School	CIP Code Number	1S1 Academic Achievement	1S2 Academic Achievement	2S1 Technical Skills Attainment	3S1 Completion	4S1 Graduation (NCLB) (*)	5S1 Post Graduate Follow Up	6S1 Non-Trad Participation	6S2 Non-Trad Completion
State Agreed Upon Level		69.00%	67.00%	80.00%	89.25%	90.67%	75.00%	11.25%	13.00%
	010901	--	--	--	--	--	--	46.15%	--
	110601	--	--	--	--	--	--	27.59%	50.00%
	140401	--	--	--	--	--	--	16.67%	16.67%
	149999	--	--	--	--	--	--	15.63%	15.63%
	520407	--	--	--	--	--	--	100%	--
	990000	100%	100%	--	100%	100%	--	--	--
	149999	--	--	--	--	--	--	7.14%	.00%
	520401	100%	.00%	--	100%	--	--	--	--
	520701	--	--	--	--	--	--	55.56%	50.00%
Carmel High School	190000	--	--	--	--	--	100%	--	--
	190501	100%	100%	100%	100%	--	--	--	--
	190504	--	--	--	--	--	100%	--	--
	190701	--	--	--	--	--	.00%	--	--
	190704	100%	100%	100%	100%	--	100%	--	--
	190901	--	--	--	--	--	100%	--	--
	521499	--	--	--	--	--	100%	--	--
	521801	100%	100%	--	100%	--	--	--	--
Pike High School	100305	100%	100%	--	--	--	--	100%	--
	110901	100%	--	--	100%	--	--	29.00%	--
	120401	40.00%	83.00%	--	100%	100%	--	100%	--
	120504	--	25.00%	100%	100%	100%	--	--	--
	131210	--	100%	--	--	--	--	--	--



School	CIP Code Number	1S1 Academic Achievement	1S2 Academic Achievement	2S1 Technical Skills Attainment	3S1 Completion	4S1 Graduation (NCLB) (*)	5S1 Post Graduate Follow Up	6S1 Non-Trad Participation	6S2 Non-Trad Completion
State Agreed Upon Level		69.00%	67.00%	80.00%	89.25%	90.67%	75.00%	11.25%	13.00%
	149999	100%	100%	--	100%	--	100%	15.00%	--
	190501	--	33.33%	100%	100%	100%	100%	42.73%	--
	190601	--	100%	100%	100%	--	--	--	--
	190704	--	--	--	--	--	100%	--	--
	190706	--	100%	--	100%	100%	100%	--	--
	470603	100%	100%	--	100%	100%	--	--	--
	510601	80.00%	75.00%	100%	100%	100%	--	--	--
	510801	75.00%	87.50%	--	100%	100%	--	--	--
	511102	100%	100%	--	100%	100%	--	--	--
	511614	25.00%	33.33%	--	--	--	--	--	--
	520299	--	--	--	--	--	100%	--	--
	520304	33.33%	100%	--	100%	100%	--	--	--
	521910	--	100%	--	--	--	--	--	--
	529999	--	100%	--	100%	--	--	--	--
J. Everett Light Career Center	090701	56.00%	79.00%	--	100%	87.00%	100%	--	--
	090702	100%	100%	--	100%	100%	100%	--	--
	100305	61.11%	38.89%	100%	85.00%	88.89%	100%	72.50%	60.00%
	110201	88.24%	82.00%	--	100%	94.12%	100%	--	--
	120401	57.14%	55.00%	100%	100%	93.00%	100%	5.00%	--
	120402	--	--	--	100%	100%	--	20.00%	--
	131210	75.00%	83.33%	100%	92.86%	72.22%	100%	--	--
	151301	--	--	--	--	--	100%	--	--
	430107	66.67%	58.33%	--	88.00%	76.47%	100%	24.24%	30.77%



School	CIP Code Number	1S1 Academic Achievement	1S2 Academic Achievement	2S1 Technical Skills Attainment	3S1 Completion	4S1 Graduation (NCLB) (*)	5S1 Post Graduate Follow Up	6S1 Non-Trad Participation	6S2 Non-Trad Completion
State Agreed Upon Level		69.00%	67.00%	80.00%	89.25%	90.67%	75.00%	11.25%	13.00%
	430203	77.78%	77.78%	100%	100%	94.74%	89.00%	7.69%	6.06%
	460201	--	--	--	--	--	100%	--	--
	470104	75.00%	75.00%	100%	75.00%	75.00%	100%	3.03%	--
	470603	65.00%	50.00%	--	76.00%	80.95%	100%	2.22%	4.00%
	470604	60.00%	57.14%	--	86.11%	78.38%	97.00%	2.60%	--
	480501	--	--	--	--	--	100%	--	--
	480508	75.00%	76.19%	100%	95.00%	90.00%	94.00%	--	--
	500402	85.71%	86.00%	--	100%	100%	100%	--	--
	510601	62.50%	60.00%	100%	100%	92.86%	97.00%	7.27%	12.50%
	510904	100%	83.33%	100%	100%	100%	100%	--	--
	511104	60.87%	52.38%	100%	100%	95.24%	100%	--	--
	511614	61.90%	79.07%	100%	100%	95.83%	98.21%	--	--
	520204	58.00%	58.00%	--	77.00%	100%	--	--	--
	520401	50.00%	100%	--	100%	100%	92.31%	--	--
	521910	52.63%	45.00%	90.91%	95.65%	94.74%	94.74%	--	--
Noblesville High School	190501	--	--	--	--	--	--	45.71%	100%
	190406	100%	--	--	--	--	--	--	--
	190706	100%	--	100%	100%	100%	--	--	--
	520299	100%	100%	--	100%	100%	--	--	--
	529999	100%	100%	--	100%	100%	--	--	--
North Central High School	190501	--	--	--	100%	--	100%	--	--
	190706	33.33%	66.67%	100%	100%	100%	100%	--	--
	190707	---	--	--	100%	100%	--	--	--
	190901	--	--	--	--	--	100%	--	--



School	CIP Code Number	1S1 Academic Achievement	1S2 Academic Achievement	2S1 Technical Skills Attainment	3S1 Completion	4S1 Graduation (NCLB) (*)	5S1 Post Graduate Follow Up	6S1 Non-Trad Participation	6S2 Non-Trad Completion
State Agreed Upon Level		69.00%	67.00%	80.00%	89.25%	90.67%	75.00%	11.25%	13.00%
	301901	--	--	100%	50.00%	50.00%	100%	42.55%	--
Westfield Washington High School	110201	100%	50.00%	--	100%	100%	--	--	--
	110801	100%	--	--	100%	100%	--	--	--
	149999	--	--	--	--	--	--	19.14%	--
	190501	--	--	--	--	--	--	45.16%	--
	190504	100%	100%	--	100%	100%	--	45.45%	100%
	520304	100%	100%	--	100%	100%	--	--	--
	520411	--	--	--	--	--	--	80.95%	--
	520701	--	--	--	--	--	--	35.71%	--
	520703	--	--	--	100%	100%	--	--	--
Sheridan High/Middle School	010104	--	--	--	--	--	--	25.00%	--
	010201	100%	100%	--	100%	100%	--	--	--
	010901	--	--	--	--	--	--	60.87%	100%
	190501	--	--	--	--	--	--	38.10%	--
	480508	100%	100%	--	100%	100%	--	--	--
	520701	--	--	--	--	--	--	20.69%	--
Hamilton Southeastern High School	010605	--	--	--	--	--	--	63.41%	--
	140501	--	--	--	--	--	--	50.00%	--
	149999	--	--	--	--	--	--	9.33%	--
	190501	--	--	--	--	--	--	40.68%	--
Fishers High School	149999	100%	100%	--	100%	100%	--	--	--
Zionsville High School	190601	--	100%	--	100%	--	--	--	--



Disaggregated Student Performance Indicator Results

	1S1 Academic Achievement	1S2 Academic Achievement	2S1 Technical Skills Attainment	3S1 Completion	4S1 Graduation (NCLB)	5S1 Placement	6S1 Non-Trad Participation	6S2 Non-Trad Completion
Male	70.94%	67.23%	96.55%	91.73%	87.04%	97.65%	33.91%	10.95%
Female	58.24%	66.67%	100%	97.89%	93.56%	98.96%	28.38%	9.41%
American Indian	0%	0%	0%	0%	0%	100%	100%	0%
Black	50.00%	62.32%	98.67%	95.96%	92.34%	99.53%	32.18%	16.67%
Asian	100%	100%	0%	100%	100%	100%	21.95%	33.33%
Hispanic	42.11%	33.33%	100%	95.00%	88.89%	95.24%	32.08%	0%
White	76.47%	72.27%	100%	93.68%	88.46%	97.47%	31.51%	8.15%
Other Race	62.50%	62.50%	100%	100%	93.75	100%	30.88%	0%
Disabled	44.00%	29.17%	100%	88.89%	100%	100%	37.88%	16.67%
Econom. Disadv.	52.94%	52.94%	100%	94.74%	92.86%	100%	44.65%	40.00%
Nontraditional	76.19%	60.00%	0%	91.67%	85.00%	100%	100%	100%
Single Parent	0%	0%	0%	0%	0%	0%	0%	0%
Displaced Homkr.	0%	0%	0%	0%	0%	0%	0%	0%
Othr. Ed. Bar.	66.67%	77.78%	100%	90.00%	71.43%	100%	34.15%	0%
Limited Eng. Prof.	0%	0%	0%	0%	0%	0%	0%	0%



Remediation³

(This information has not yet been updated for this year, however when the updated information is available to us we will correct and repost the dashboards.)

Type of Remediation	AVD #24 2008 CTE Graduates	2008 Statewide CTE Graduates	All Post Secondary First Time Entries 2008	AVD #24 2007 CTE Graduates	2007 Statewide CTE Graduates	All Post Secondary First Time Entries 2007
Math Only	12.70%	18.77%	22.04%	19.00%	29.52%	23.39%
Language Only	2.14%	1.71%	1.00%	9.63%	9.69%	11.00%
Math & Language	1.20%	1.37%	0.45%	7.13%	7.05%	8.53%

³ Data received from InTers and The Commission for Higher Education. Remediation is any student that takes at least one hour of a remedial course.



TOP 48

Districts Ranked by Results on Student Performance Indicators

Rank	AVD Name	AVD #	No. of Students
1	Warsaw Area	12	2,863
2	Area 10 Indiana Trails	10	5,625
3	Vigo County	35	6,139
4	Porter County	5	3,994
5	West Central Indiana	23	2,787
6	Wawasee Area	13	2,318
7	MSD of Wayne TWP	31	8,991
8	North Central Area	11	3,197
9	John H. Hinds Area CC	25	1,096
10	New Castle Area	27	2,807
11	Area 18 Vocational Ed	18	8,072
12	Anthis Career Center	14	12,751
13	Four County	9	6,626
14	Parke-Vermillion	29	1,002
15	Southlake Area Career Coop	4	2,710
16	Hoosier Hills Career Cntr.	36	4,870
17	McKenzie Career Center	33	2,487
18	Patoka Valley	47	3,662
19	South Bend Community	7	2,941
20	Kokomo Area Career Center	20	3,337
21	Southeaster CC	42	5,702
22	North Lawrence Career Cntr	19	5,198
23	Central Nine Career Cntr	37	8,760
24	Twin Rivers	43	2,059

Rank	AVD Name	AVD #	No. of Students
25	Tippecanoe	19	5,198
26	Evansville	46	6,046
27	J. Everett Light CC	24	10,719
28	Twin Rivers	39	1,388
29	Walker Career Center	49	4,425
30	Blue River CC	38	1,141
31	Whitewater Tech	34	3,692
32	Muncie Area Career Cntr	22	3,256
33	A. K. Smith ACC	6	3,004
34	Heartland Career Center	17	1,864
35	Area 30 Career Center	30	1,843
36	Gary Area Career Center	3	1,738
37	Prosser School of Tech.	45	7,771
38	Elkhart Area Career Cntr	8	8,593
39	Ebbert Education Center	26	2,202
40	Richmond Area Career Cntr.	28	1,524
41	Tucker Area Career Cntr	21	1,748
42	School City of Hammond	2	4,139
43	Columbus Area Career Cntr	41	5,438
44	Century Career Center	16	2,027
45	Perry County Area	48	910
46	East Chicago	1	805
47	Vocational Career HS	32	1,393
48	Lost River Career Center	44	1,206



District Ranking by Indicator

Area District	1S1 Academic Achievement New –Lang Arts	1S2 Academic Achievement – New Math	2S1 Technical Skills Attainment	3S1 Completion	4S1 Graduation (NCLB) (*)	5S1 Placement	6S1 Non-Trad Participation	6S2 Non-Trad Completion	State Rank
Ranking	39	33	20	31	31	2	10	38	27

Technical Skills Assessment Results by Assessment Type

