

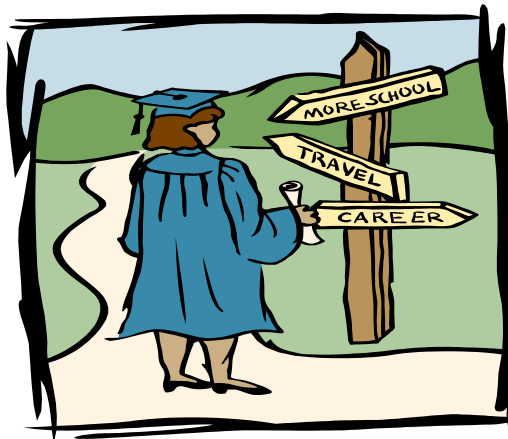
ABOUT US

The J. Everett Light Career Center is committed to ensuring success for all students who chose pathways through Career and Technical Education. If your student receives modifications or accommodations for a learning disability, developmental disorder or any kind of impairment, give us a call to find out how we can help with successful educational placements and transitions.



For more information regarding special services at J. Everett Light, please call:

Jennifer Thomas, Special Education
Coordinator
(317) 259-5265



J. Everett Light Career Center

The Academic Center

1901 E. 86th St.
Indianapolis, IN 46240

Phone: 317-259-5265
Fax: 317-259-5298
E-mail: jmthomas@msdwt.k12.in.us

SPECIAL SERVICES DEPARTMENT

J. Everett Light Career
Center

*The Academic
Center*



Check us out on the web!
WWW.JELCC.COM

(317) 259-5265

THE ACADEMIC CENTER

The nature of career and technical education is a



Make the grade by becoming a self-advocate.

combination of both theory and practice. This includes hands-on instruction and smaller learning

environments which consist of students with similar interests-this can be conducive to more independent growth and learning.

The Academic Center at J. Everett Light offers the following supports to students with disabilities. With all students, individualized attention at school and home is also critical to their success:

- ◆ Testing Support
- ◆ Small Group Study Sessions
- ◆ Assignment Assistance
- ◆ Weekly Progress Reports
- ◆ Transition Assistance
- ◆ Assessment & Placement
- ◆ In-Class Support
- ◆ One-to-One Tutoring

Community Involvement

Many programs at J. Everett Light Career Center have opportunities for students to work in job sites within their communities. In Health Occupations, students assist nurses and residents at local nursing homes; in Veterinary Assisting, students are placed in Veterinary clinics to get on-the-job training and skills while earning credit towards high school graduation. Several students have secured job placements on their own in the Automotive field, Business Technology and Computer Programming areas.

Beyond High School

The Special Services Department works with our consortium of sending schools to provide a link between high school and beyond. For some students, this may be college and post-secondary training, for others, it translates to full time employment.

Several of our classes at JELCC have articulation agreements with technical schools which enable students to earn partial college credits while in our 2 year programs.



Through our internships, many former students are now full or part time employees at the job site they began their vocational experience. In addition, every year, JELCC hosts a Career Fair, in which several area colleges

showcase their programs to our students. Throughout the year, our teachers invite several industry representatives and speakers into their classrooms to share valuable information about programming, employment and the skill sets necessary after high school.

JELCC is committed to providing Career and Technical Training to all students. We strive to give students a unique experience that will lead them to a future that is bright and full of promise.

Vocational Assessment

Vocational Assessment is available to students interested in attending JELCC, but are unsure what career area best suits their interests and abilities. The assessment focuses on both academic and hands-on skills and helps determine what classes would be a best fit, as well as career pathways for the future. To find out more, call us at 259-5265.



J. Everett Light Career Center

The Academic Center

1901 E. 86th St.
Indianapolis, IN 46240

Phone: 317-259-5265
Fax: 317-259-5298
E-mail: jmthomas@msdwt.k12.in.us